

Frequently Asked Questions

How can I access services for my child?

All students are urged to participate in Tier 1 screenings. If this process indicates that your child could potentially benefit from more support, you will be contacted by your school. You may also contact your school and ask to speak with a SHARE staff member regarding services.

Can I say "No" to SHARE services?

YES. Participation in SHARE is voluntary. If you do not want your child(ren) to participate in Tier 1 screenings, they will be given an alternate activity and, therefore, will not be identified for Tier 2 or 3 services.

What are the benefits of the SHARE Project for my child's school?

Along with ensuring a positive school environment for all students, SHARE will provide additional social and emotional supports for students and their families.

Services are being provided by:

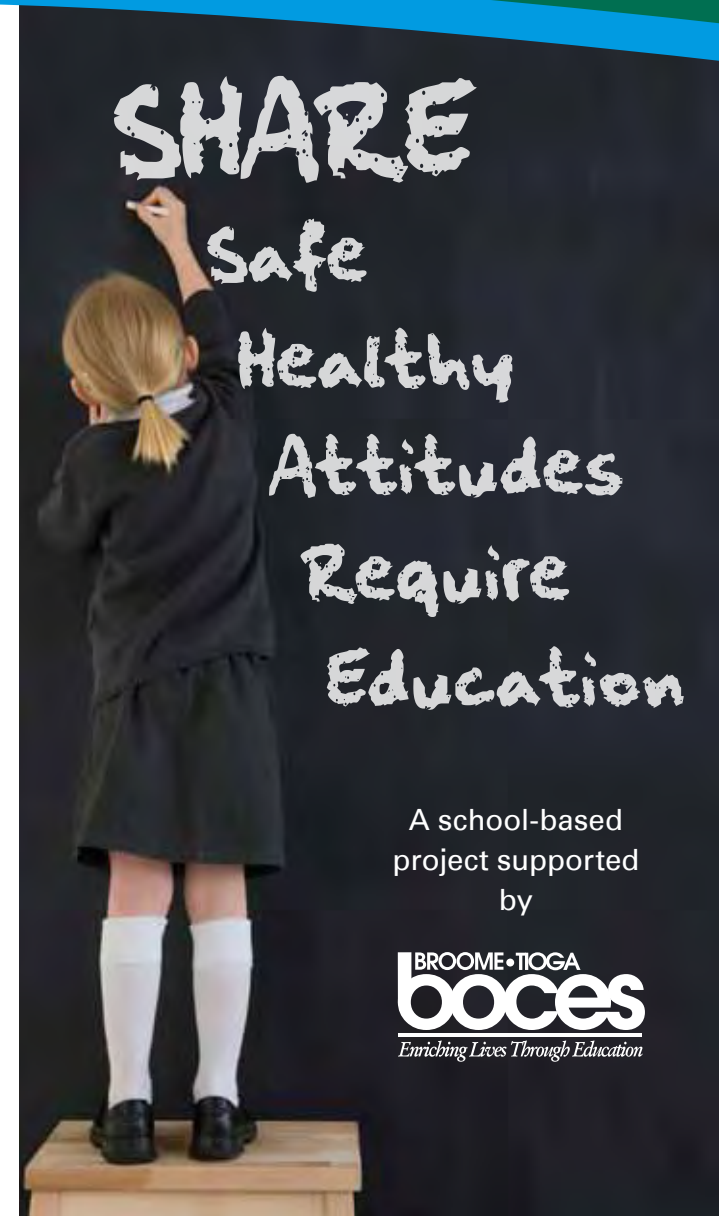


School Districts Served by SHARE

- Binghamton City
- BOCES Learning Centers
- Chenango Forks
- Chenango Valley
- Johnson City
- Maine-Endwell
- Union-Endicott
- Vestal
- Whitney Point
- Windsor

For more information, contact:

- Your school district.
- BT-BOCES SHARE Project Director
Jessica Villecco-Frederick, MA, CAS
Phone: 607-766-3755
Email: jfrederi@btboces.org
- Binghamton University,
Center for Best Practices in
Community Schools,
SHARE Program Coordinator
Lisa V. Blitz, PhD, LCSW-R
Phone: 607-777-9169
Email: lblitz@binghamton.edu
- Lourdes Hospital Youth Services
Family Support Program Manager
Heidi Mikeska
Phone: 607-584-4570
Email: hmikeska@lourdes.com



A school-based project supported by



through the





Our Mission

"To promote the mental health of students, to enhance academic achievement, to prevent violence and substance abuse, and to create safe and respectful climates through sustainable school/family/community partnerships and the use of research-based prevention and early intervention programs, policies, and procedures."

What Is SHARE?

The SHARE Project is a federally funded grant program that will begin providing services in Broome County on September 1, 2010. SHARE is designed to support our school districts by providing programs and services to help promote healthy students and safe schools.

SHARE is based on a three-tiered model:



Tier 1

UNIVERSAL/FOR ALL STUDENTS

- Support and information for students and families.
- Anti-violence/bullying curriculum.
- Brief, confidential in-school questionnaire.
- Specialized training for teachers.

Tier 2

SPECIALIZED STUDENT SERVICES

- Parent/guardian consent required.
- Skill-building groups on topics such as self-esteem, social skills, positive communication, anger management, and healthy living.
- Referrals to community agencies.

Tier 3

STUDENT & FAMILY SERVICES

- Parent/guardian consent required.
- Individual, family and group counseling.
- Family centered groups.
- Early childhood services.
- Referrals to community resources.

